



DECADE PRODUCTS®

INDUSTRIAL

YOUR SINGLE SOURCE FOR PALLET AND CONTAINER SOLUTIONS

Decade Products offers a complete line of reusable plastic containers and pallets for industrial applications worldwide. Our products offer a unique level of quality, performance, and cost-effective advantages unlike any other containers and pallets on the market. Engineered from high-density polyethylene (HDPE) structural foam, these strong, yet lightweight, completely reusable containers and pallets offer increased life span, superior corrosion resistance, and virtually no maintenance.

- Work in Process Handling - shipping and handling of parts both inter- and intra- plant
- Heavy bulk storage for batteries, metal parts, liquids, and raw materials
- Returnable containers for scrap metal, paper, and plastics
- Safe containment - no leaks or spills
- Organization of work-cells
- Order Picking
- Product Staging
- RFID tags for tracking and control available
- Transportation of finished goods
- Distribution and Warehousing
- Custom sizes, colors, and logos available

BINS AND CONTAINERS

As an industry leader, Decade Products manufactures plastic bulk bins for a wide variety of applications. Well known in the food processing, material handling, agricultural and recycling industries, Decade bins have become an industry standard. The unique interlocking corners on Decade bins allow for easy and safe stacking even under the most extreme applications. Because of the strength and durability of the bins, Decade bins are extremely cost effective vs. wood and corrugated.

MACX® & MACX48® BINS

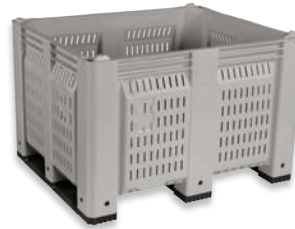
MACX® containers are built to meet the most rigorous demands. These high-impact resistant HDPE structural foam, fixed wall containers are rugged and recyclable. MACX® containers are temperature resistant, UV resistant, and can be stacked up to 10 high*. They also offer compact storage, a versatile runner design, and are available in a variety of colors. For custom sizes and options, please visit our customization page.



MACX® Solid Blue Long Side Runner



MACX48® Solid – Yellow



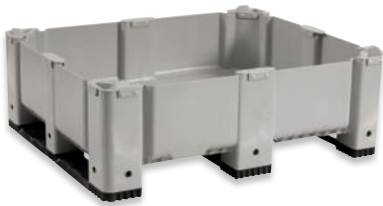
MACX® Vented Gray Short Side Runner



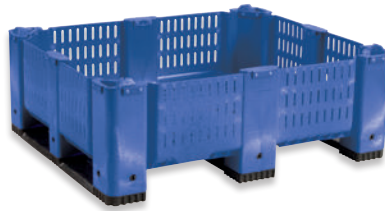
MACX48® Vented – Gray

MACX® HALF BINS

Our Shortened MACX® Half-Bins are perfect for low volume storage and low clearance applications.



MACX® Half-Bin Solid – Gray Short Side Runner



MACX® Half-Bin Vented – Blue Short Side Runner

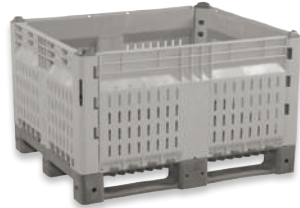
Specifications	MACX	MACX48	MACX Half
External Dimensions	48" x 40" x 31"	48" x 48" x 28"	48" x 40" x 18"
Internal Dimensions	45" x 36.75" x 25.75"	44.73" x 44.73" x 23.86"	45" x 36.75" x 12.75"
Weight Capacity	1,500 lbs.	1,500 lbs.	800 lbs.
Internal Volume	190 U.S. gallons, 25.4 cubic feet	217 U.S. gallons, 49,603 cubic inches	12.5 cubic feet
Stack Load	14,000 lbs.	14,000 lbs.	6,400 lbs.
Tare Weight	92 lbs.	93 lbs.	64 lbs.
Stack Height	Up to 10*	Up to 10*	Up to 10*
Truckload Quantity	150	94	150
Material	High-density polyethylene structural foam	High-density polyethylene structural foam	High-density polyethylene structural foam
Runners	Replaceable — Available in short side, long side, and two-runner configurations	Replaceable — Available in two-runner configuration	Replaceable — Available in short side runner configuration

KITBIN® & KITBIN® XT CONTAINERS

The KitBin® shipping and storage container system transforms a good idea—the “knock-down” container—into a great idea. That’s because, unlike folding-wall containers, the patented KitBin® design allows all walls to be completely detached from the pallet. The system is comprised of a pallet base and four independent sides, fitted together to create a strong and durable container while offering space savings when not in use. Four disassembled containers fit into one KitBin® with the pallet bases nested on top. Five KitBins can fit into the same footprint as one. It means savings of up to 63% storage area space. Removable walls provide easy access for loading and unloading. All panels are interchangeable and can be replaced one at a time if damaged. You cut replacement and inventory costs...and never risk downtime from a lack of container inventory.



KitBin® Solid – Gray



KitBin® Vented – Gray



KitBin® XT Container



KitBin® XT Drop Door

Specifications	KitBin	KitBin XT
Pallet Size	48" x 40"	48" x 40"
External Dimensions	48" x 40" x 28"	48" x 40" x 50"
Internal Dimensions	44" x 36" x 23"	44" x 36" x 44"
Tare Weight (empty)	84 lbs.	123 lbs.
Maximum Load	1,320 lbs.	2,200 lbs.
Maximum Stacking Load	6,600 lbs.	6,600 lbs.
Internal Volume	18 bushels, 163 U.S. gallons, 20 cubic feet	30 bushels, 280 U.S. gallons, 37 cubic feet

DOLAV® CONTAINERS

Dolav® box pallets are heavy-duty, easy to clean, resistant to corrosion, are durable and lightweight. Dolav® box pallets are UV resistant, can withstand a wide range of temperatures, and can be stacked up to 10 high*. Dolav® box pallets are used in all kinds of light and heavy industries including chemical, textile, and pharmaceutical.



Dolav® Type 800 Solid – Yellow



Dolav® Type 1000 Solid – Gray



Dolav® Type 1120 Solid – Blue

Specifications	Dolav 800	Dolav 1000	Dolav 1120
External Dimensions	48" x 32" x 29"	48" x 40" x 29"	44" x 44" x 31"
Internal Dimensions	44" x 28" x 23.6"	44" x 36" x 23.6"	40.7" x 40.7" x 25.6"
Weight Capacity	1,543 lbs.	1,543 lbs.	1,543 lbs.
Internal Volume	132 U.S. gallons, 16 cubic feet	158 U.S. gallons, 21 cubic feet	184 U.S. gallons, 24 cubic feet
Stack Load	8,818 lbs.	8,818 lbs.	8,818 lbs.
Tare Weight	71 lbs.	82 lbs.	88 lbs.
Stack Height	Up to 10*	Up to 10*	Up to 10*
Truckload Quantity	90	104	64
Material	High-density polyethylene structural foam	High-density polyethylene structural foam	High-density polyethylene structural foam
Runners	Molded non-removable 4-way entry	Molded non-removable 4-way entry	Molded non-removable 2-way entry

* Bins must be placed on firm, level surface and must be loaded with an evenly distributed weight.

Dimensions may vary +/- 1/2 inch and tare weight may vary +/- 2 lbs. Decade Products reserves the right to change the details of this page at any time.

PALLETS

Decade Products manufactures and markets plastic pallets for industrial applications worldwide. Engineered of high-density polyethylene (HDPE), Decade pallets are strong yet lightweight, corrosion resistant and durable. Because they are completely reusable and virtually maintenance-free, Decade pallets are more cost-effective and user-friendly than pallets manufactured from wood, cardboard, and metal.

From heavy-duty pallets for industrial use to “one-way” pallets for export use, you will discover that our products offer a unique level of performance, quality and cost-effective advantages unlike any other pallets on the market.

EXPORT PALLETS – MADE FROM 100% RECYCLED MATERIALS

These economical “one way” export pallets meet EU, Canadian and Asian customs requirements. Fully recyclable plastic, they are easy to clean and do not require fumigation as in the case of wood pallets. They will not increase in weight, harbor pests or sustain water damage, eliminating the expensive risks of refused entry or lengthy customs delays. Fully nestable pallets allow for maximum space savings. The 4-way entry design of all our export pallets provides easy access during handling.



Export Nestable Pallet



330 Nestable Export Pallet

Part Number	Description	Dimensions	Height	Weight	Truck Load	Dynamic Load	Static Load
GS4840NESTHD	Export Nestable	48"x40"	5.5"	17 lb.	2,250	2,000	4,500
CPP330ACM	330 Nestable Export	48"x40"	5.5"	23 lb.	1,560	2,200	5,000
CPP530ACM	530 Nestable Export	48"x45"	5.5"	24.5 lb.	1,590	2,500	8,800

Snap on runners available for the 330 and the 530.

SMOOTH SOLID DECK PALLETS – MADE FROM 100% VIRGIN MATERIALS

Our smooth pallets feature a solid flat top, smooth surfaces for easy cleaning, plus extreme temperature and UV degradation resistance. Engineered for dynamic load ratings from 2,600 to 5,000 lbs. and static load ratings from 11,000 to 25,000 lbs. Four-way forklift entry. Available in various colors in standard 48" x 40" and 48" x 32" inch footprints.



48" x 40" KitBin® – Smooth Gray



Green



Blue



Yellow

Part Number	Description	Dimensions	Height	Weight	Truck Load	Dynamic Load	Static Load	Racking Load
5210020000	KitBin® Euro Smooth Blue	48"x32"	5.9"	26 lb.	572	2,600	11,000	660
PNH2001*	KitBin® Smooth Gray	48"x40"	5.9"	43 lb.	392	4,000	13,200	-

* Also available in Green—PNH2001GN, Blue—PNH2001BL, and Yellow—PHN2001YL.

RACKABLE PALLETS

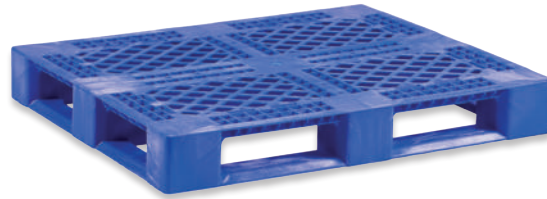
RACX® PICTURE FRAME PALLET



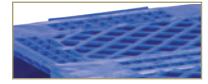
Decade's RACX® Pallet combines strength and economy in a lightweight one-piece design for superior performance at an affordable price. Fabricated of recycled HDPE plastics, these rackable pallets feature a picture frame bottom with runners on all four sides for stability. They are ideal for use in warehouse racking systems, as well as stack loading, closed loop transport, floor storage and automated material handling applications. In addition, RACX® Pallets are engineered so that the bottom pallet can handle the full static load when loaded pallets are stacked 2 or more high; and offer unsupported rack capacities up to 2,200 lbs with an evenly distributed load. Available in a standard size of 48"x40 inches, RACX® Pallets may be fitted with optional rubber grommets or lip to keep contents from slipping. Additional colors available in 100% virgin materials with minimum order.



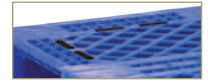
RACX Picture Frame Pallet – Black



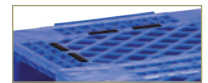
RACX Picture Frame Pallet – Blue



With Lip



With Grommets



With Lip & Grommets

Part Number	Description	Dimensions	Height	Weight	Truck Load	Dynamic Load	Static Load	Racking Load**
DP4840*	RACX Picture Frame	48"x40"	6.1"	35 lb.	526	5,000	25,000	2,200
DP4840G*	RACX Picture Frame w/ Grommets	48"x40"	6.1"	35.5 lb.	526	5,000	25,000	2,200
DP4840L*	RACX Picture Frame w/ Lip	48"x40"	6.1"	35 lb.	526	5,000	25,000	2,200
DP4840LG*	RACX Picture Frame w/ Lip & Grommets	48"x40"	6.1"	35.5 lb.	526	5,000	25,000	2,200

* All part numbers shown are black pallets. Also available in blue. DP4840BL–RACX Blue Picture Frame, DP4840BLG–RACX Blue Picture Frame with Grommets, DP4840BLL–RACX Blue Picture Frame with Lip, DP4840BLLG–RACX Blue Picture Frame with Lip & Grommets

** All racking load specs are based on evenly distributed loads.

HEAVY-DUTY PALLETS

Decade's Heavy-Duty Pallets are widely used in stack loading, closed loop transport, floor storage and automated material handling equipment throughout many warehousing, general material handling, distribution center, and returnable shipping applications around the world. Our heavy-duty pallets are available in various sizes with options including rubber grommets, reinforcement rods, and 3-runner bottoms.



40"x32" HD 3-Runner 3-Rod Pallet



48"x40" HD Pallet

Part Number	Description	Dimensions	Height	Weight	Truck Load	Dynamic Load	Static Load	Racking Load**
GS40323R3	Heavy-Duty 3-Runner (32") 3-Rod	40"x32"	5.5"	45 lb.	810	5,000	25,000	2,500
GS3737000	Heavy-Duty Picture Frame (No Rods)	37"x37"	5.5"	47 lb.	750	5,000	25,000	2,000
GS3737004	Heavy-Duty Picture Frame 4-Rod	37"x37"	5.5"	50 lb.	750	5,000	25,000	2,500
GS4448000	Heavy-Duty Picture Frame (No Rods)	44"x48"	5.8"	65 lb.	540	5,000	20,000	1,500
GS4448003	Heavy-Duty Picture Frame 3-Rod	44"x48"	5.8"	69 lb.	540	5,000	30,000	2,800
GSM4448000	Heavy-Duty Picture Frame (No Rods)	110x120cm	5.8"	67 lb.	540	5,000	30,000	2,800
GSM4448003	Heavy-Duty Picture Frame 3-Rod	110x120cm	5.8"	72 lb.	540	5,000	30,000	2,800
GS4840000	Heavy-Duty Picture Frame (No Rods)	48"x40"	5.9"	53 lb.	540	5,000	25,000	1,500
GS4840003	Heavy-Duty Picture Frame 3-Rod	48"x40"	5.9"	57 lb.	540	5,000	30,000	2,800
GS4840005	Heavy-Duty Picture Frame 5-Rod	48"x40"	5.9"	59 lb.	540	5,000	30,000	3,000

** All racking load specs are based on evenly distributed loads.

CUSTOM PRODUCTS

At Decade Products, we tackle the design and production challenges others may care to avoid. Some suppliers will reluctantly provide you with a "custom" container in name only - a unit that is "close enough" in their view from current inventory. And that's where Decade Products is different. We actively seek business in the custom container market niche because it leverages our unique experience, resources, and capabilities.

Whether you need special size containers to work with your current material handling and shelving system, or containers with drop-doors or casters, Decade Products can provide you with a custom solution that precisely meets your requirements. Multiple custom options are also available. Contact your regional sales manager for more information.

HEIGHTENED BINS

Our Heightened MACX® Bins are custom-made to the height that you need to fit your application.

Popular applications include:

- Recycling
- Scrap Collection
- Leather Processing
- Material Handling

Standard Footprint	48"x40"
Height Range	36" - 77"
Standard Colors	Blue, Gray, Yellow, White
Weight Capacity	1,500 lbs.



MACX® Heightened – Blue

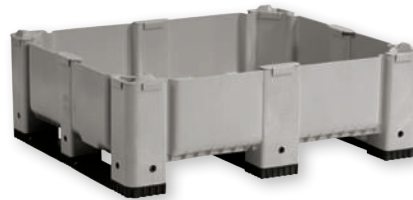
SHORTENED BINS

Our Shortened MACX® and MACX®48 Bins are custom-made to the height that you need to fit your application. A cut and weld version is also available for those applications that require ribbing at the top of the bin for additional structural support.

Popular applications include:

- Scrap Collection
- Small Part Storage

Standard Footprint	48"x40" and 48"x48"
Height Range	10" - 30"
Standard Colors	Blue, Gray, Yellow, White
Weight Capacity	1,000 lbs.



MACX® Half Bin Solid – Gray



MACX® Half Bin Vented – Blue

LENGTHENED/SHORTENED LENGTH BINS

Our lengthened and shortened length MACX® Bins are custom-made to the height or length that you need to fit exactly into your system or shelving.

Popular applications include:

- Recycling
- Scrap Collection
- Material Handling

Lengthened Range	40"x49" - 40"x144"
Widened Range	48"x41" - 48"x136"
Shortened Length Range	40"x12" - 40"x47"
Shortened Width Range	48"x12" - 48"x39"
Standard Colors	Blue, Gray, Yellow, White
Weight Capacity	1,000 lbs.



MACX48® Shortened Length



MACX® Lengthened

CASTERS

We can assemble castors on any of our bins - improve efficiency in your work environment - improve ergonomics and work flow. Various castors are available - swivel, locking, fixed, and more.



MACX® Stackable Casters



MACX® Thru-Bottom Casters



MACX® Non Stackable Casters



MACX® Bin Cart

DOOR OPTIONS

Our MACX® containers can be customized to allow drop doors or removable sides. They can be assembled on either the length or width to suit your exact specifications. A drop door will allow your operators to access product in the bin with ease - improving ergonomics and efficacy.



MACX® Drop-Door Open



MACX® Drop-Door Closed



MACX® Removable Door – Open



MACX® Removable Door – Closed



MACX® Cut Out Wall

CUSTOM LIDS

All our MACX® containers have an available lid/cover - but if you need a lid with hinges or hasps - we can supply it! Various options are available - locking lids, snap-down, hinged and more.



MACX® Hasp Lid



Hinge



MACX® Latch Lid



Open

OPTIONS AND ACCESSORIES

Whether you need a special color or custom logo for your bin, Decade Products can provide you with the options and accessories you need to fit your specific application. If you can't find the options or accessories you need, contact your regional sales manager and we will do our best to suit your needs.

COLOR OPTIONS

MACX® & MACX®48

Our MACX® and MACX®48 Bins come in standard colors of Blue, Gray, Yellow, and White for the solid versions and in gray only for vented versions. With a minimum order quantity of two truckloads, you can customize your bins with the color of your choice.



RFID TAGS AND SYSTEMS

What is RFID?



Radio frequency identification, or RFID, is a generic term for technologies that use radio waves to automatically identify people or objects. There are several methods of identification, but the most common is to store a serial number that identifies a person or

object, and perhaps other information, on a microchip that is attached to an antenna (the chip and the antenna together are called an RFID transponder or an RFID tag). The antenna enables the chip to transmit the identification information to a reader. The reader converts the radio waves reflected back from the RFID tag into digital information that can then be passed on to computers that can make use of it.

EMBOSSED LOGOS

MACX® & MACX®48



Customize your bins with your name or company logo molded right into the bin. From simple text to detailed graphics, your logo will look great while providing a permanent sign of ownership. A minimum order quantity of two truckloads is required.

LABELS



Customize your bins with a label showing your name, company logo, sequential numbers, barcodes, or intended use for the bin. From simple text to detailed graphics, your labels will look great and are made to last. No minimum order quantity is required.

DRAIN OPTIONS

MACX®, MACX®48, & Dolav®

Need to drain liquid from your bins without having to siphon or tip them over? See our Drainplugs and Bulkheads available for the MACX®, MACX®48, and Dolav® Bins.



Bulkheads



Drainplugs

LIDS

MACX®, KitBin®, & Dolav®

Need to keep your product clean and free from dust? See our variety of lids available for the MACX® Bin, Dolav® Bins, and KitBins®. All of our lids are made from virgin materials and do not interfere with the stacking of your bins.



Dolav® Lids



MACX® Lids

CARDHOLDERS

MACX® & MACX®48

Our Cardholders provide a place to easily keep and replace labels or cards for our MACX® and MACX®48 Bins. Cardholders can be permanently fixed to the bin using a sonic welding method or can be attached with adhesive.



3"x7" - MACX® and
MACX®48



9.8"x5.6" - MACX®48

All industrial property rights, including patents, designs, copyrights and trade names are the sole and exclusive property of Decade Products. Dimensions may vary +/- in. and tare weight may vary +/- lbs. Decade reserves the right to change the details of this catalogue.